

# ***Emic Service***

***Best IT, Best Service***

**7462 Gadsby SQ.**

**Alexandria, VA 22315**

**202-557-6416**

**[www.emiccorp.com](http://www.emiccorp.com)**

**[info@emiccorp.com](mailto:info@emiccorp.com)**

## Contents

Capabilities Statement.....	3
Recent Projects .....	4
SharePoint Features we enabled .....	6

## 1. Capabilities Statement

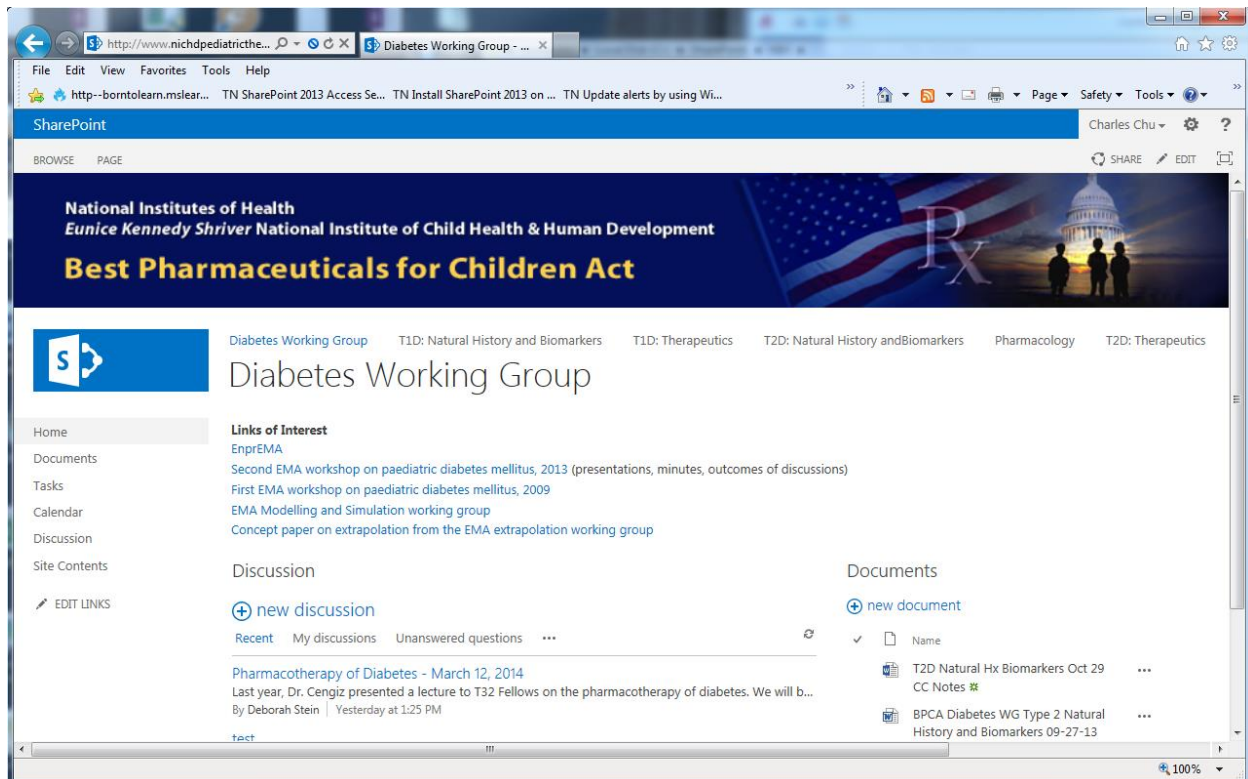
<b>Emic Service</b>	<b>Capabilities Statement</b>																								
<p>7462 Gadsby SQ., Alexandria, VA 22315 <a href="http://www.emiccorp.com">www.emiccorp.com</a> Tel:(301)250-6716 Email: info@emiccorp.com <i>Service Disabled Small Business</i></p> <p><b>SAM Registration</b> <b>DUNS: 011350959</b> <b>CAGE Code: 5T1L2</b></p> <p>Federal Aviation Administration (FAA) eFAST Master Ordering Agreements(MOAs) Holder. Contract Number: <b>DTFAWA13A-00246</b></p> 	<p><b>Services</b> <b>NAICS:</b></p> <table> <tr> <td>511210</td><td>SOFTWARE PUBLISHERS</td></tr> <tr> <td>518210</td><td>DATA PROCESSING, HOSTING, AND RELATED SERVICES</td></tr> <tr> <td>519130</td><td>INTERNET PUBLISHING AND BROADCASTING AND WEB SEARCH PORTALS</td></tr> <tr> <td>519190</td><td>ALL OTHER INFORMATION SERVICES</td></tr> <tr> <td>541330</td><td>ENGINEERING SERVICES</td></tr> <tr> <td>541511</td><td>CUSTOM COMPUTER PROGRAMMING SERVICES</td></tr> <tr> <td>541512</td><td>COMPUTER SYSTEMS DESIGN SERVICES</td></tr> <tr> <td>541513</td><td>COMPUTER FACILITIES MANAGEMENT SERVICES</td></tr> <tr> <td>541519</td><td>OTHER COMPUTER RELATED SERVICES</td></tr> <tr> <td>541611</td><td>ADMINISTRATIVE MANAGEMENT AND GENERAL MANAGEMENT CONSULTING SERVICES</td></tr> <tr> <td>541690</td><td>OTHER SCIENTIFIC AND TECHNICAL CONSULTING SERVICES</td></tr> <tr> <td>541990</td><td>ALL OTHER PROFESSIONAL, SCIENTIFIC, AND TECHNICAL SERVICES</td></tr> </table>	511210	SOFTWARE PUBLISHERS	518210	DATA PROCESSING, HOSTING, AND RELATED SERVICES	519130	INTERNET PUBLISHING AND BROADCASTING AND WEB SEARCH PORTALS	519190	ALL OTHER INFORMATION SERVICES	541330	ENGINEERING SERVICES	541511	CUSTOM COMPUTER PROGRAMMING SERVICES	541512	COMPUTER SYSTEMS DESIGN SERVICES	541513	COMPUTER FACILITIES MANAGEMENT SERVICES	541519	OTHER COMPUTER RELATED SERVICES	541611	ADMINISTRATIVE MANAGEMENT AND GENERAL MANAGEMENT CONSULTING SERVICES	541690	OTHER SCIENTIFIC AND TECHNICAL CONSULTING SERVICES	541990	ALL OTHER PROFESSIONAL, SCIENTIFIC, AND TECHNICAL SERVICES
511210	SOFTWARE PUBLISHERS																								
518210	DATA PROCESSING, HOSTING, AND RELATED SERVICES																								
519130	INTERNET PUBLISHING AND BROADCASTING AND WEB SEARCH PORTALS																								
519190	ALL OTHER INFORMATION SERVICES																								
541330	ENGINEERING SERVICES																								
541511	CUSTOM COMPUTER PROGRAMMING SERVICES																								
541512	COMPUTER SYSTEMS DESIGN SERVICES																								
541513	COMPUTER FACILITIES MANAGEMENT SERVICES																								
541519	OTHER COMPUTER RELATED SERVICES																								
541611	ADMINISTRATIVE MANAGEMENT AND GENERAL MANAGEMENT CONSULTING SERVICES																								
541690	OTHER SCIENTIFIC AND TECHNICAL CONSULTING SERVICES																								
541990	ALL OTHER PROFESSIONAL, SCIENTIFIC, AND TECHNICAL SERVICES																								
<p>EMIC Service has been in business for 7 years and offers full life software development and system integration. As a high-tech company, EMIC Service always adopted the most advanced technologies to provide customer the best quality and best price with fastest delivery.</p> <p><b>a)Full Life-cycle experience in Microsoft SharePoint Server 2013/2010, Microsoft Office SharePoint Server 2007 (MOSS) and Microsoft Portal Server 2003:</b> SharePoint architecture, installation, configuration, upgrade, migration, administration, customization, SharePoint Web parts development and SharePoint System Integration with ERP, Business Intelligence.</p> <p><b>b)System Integration/Web Development:</b> ASP.NET/C#, JSP, J2EE, PHP, Web Service, WCF;</p> <p><b>c)Database Development:</b> SQL Server, mySQL, Oracle</p> <p><b>d)Software Development:</b> C#/C++/Java, Objected-Oriented Design, UML</p> <p><b>Best Value, Best Service in IT</b></p>																									

## 2. List of some projects that we have done recently:

### NIH Task

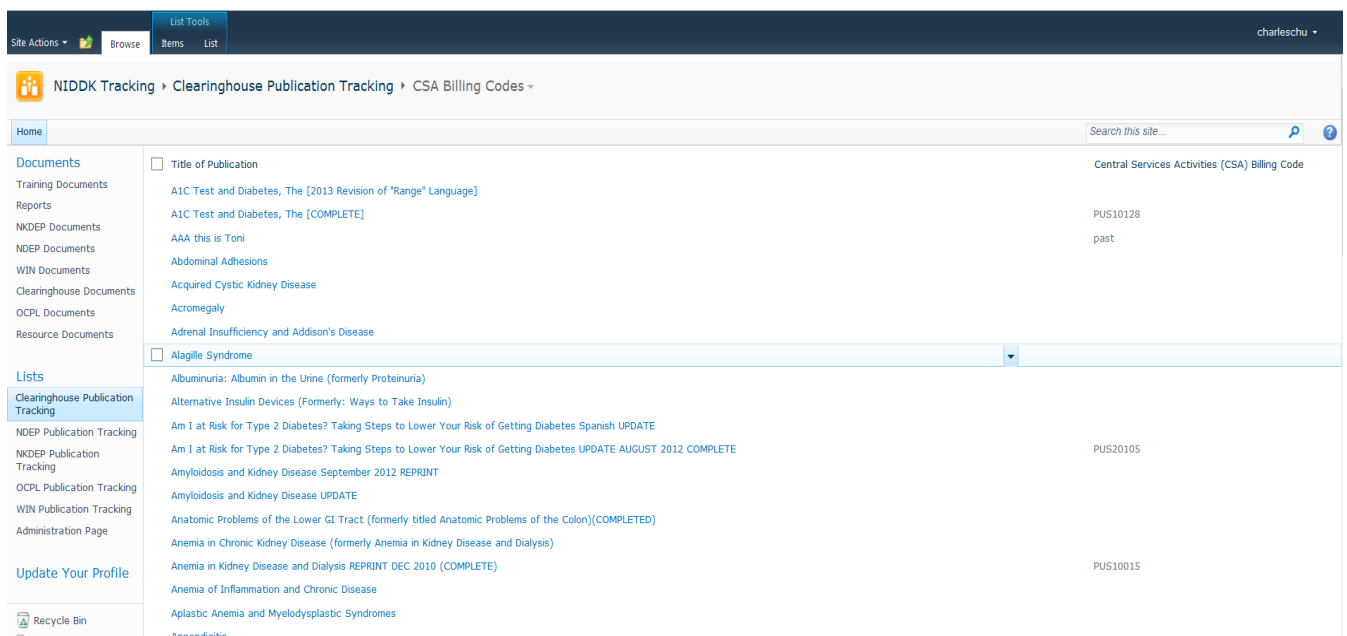
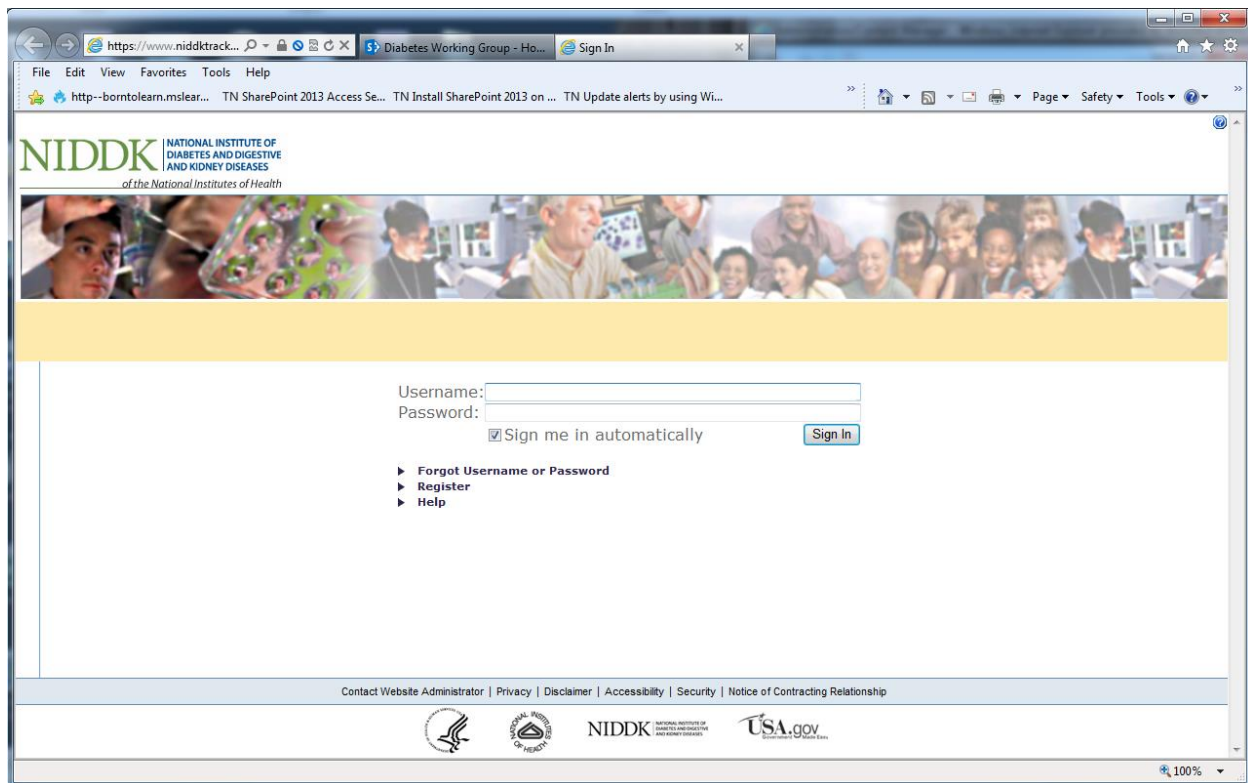
#### NICHD Diabetes Working Group (SharePoint 2013)

URL: <http://www.NICHDpediatrictherapeuticsinitiative.org> Launched on January, 22, 2014



## NIDDK Clearinghouse Publication Tracking System (SharePoint 2007 upgrade to SharePoint 2010)

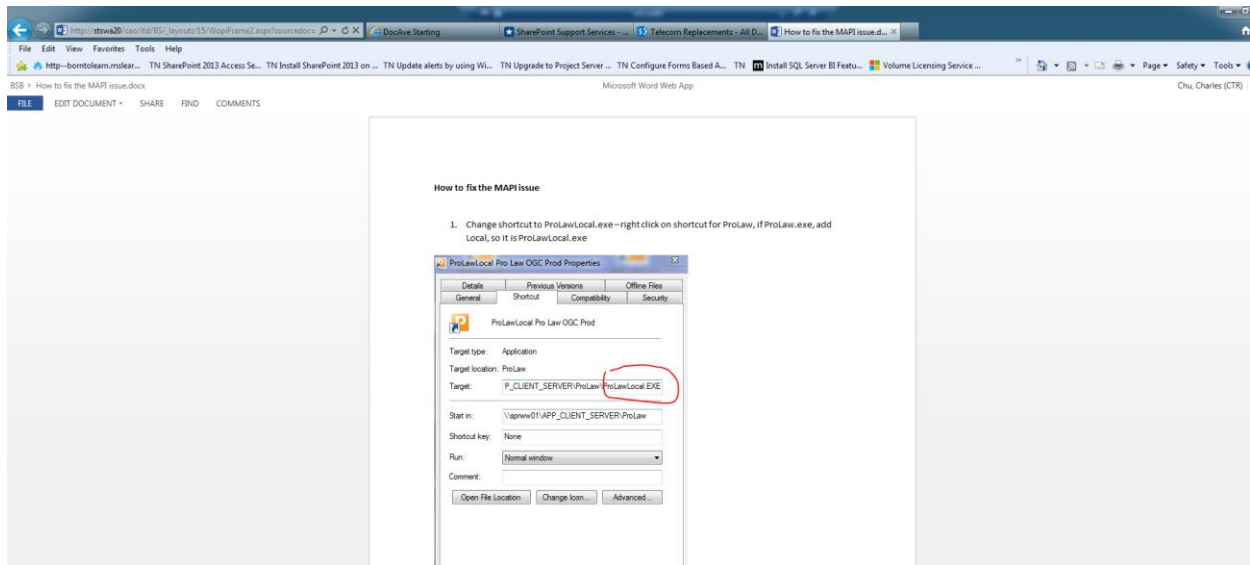
URL: <https://www.NIDDKTracking.org> Launched on September 22, 2013



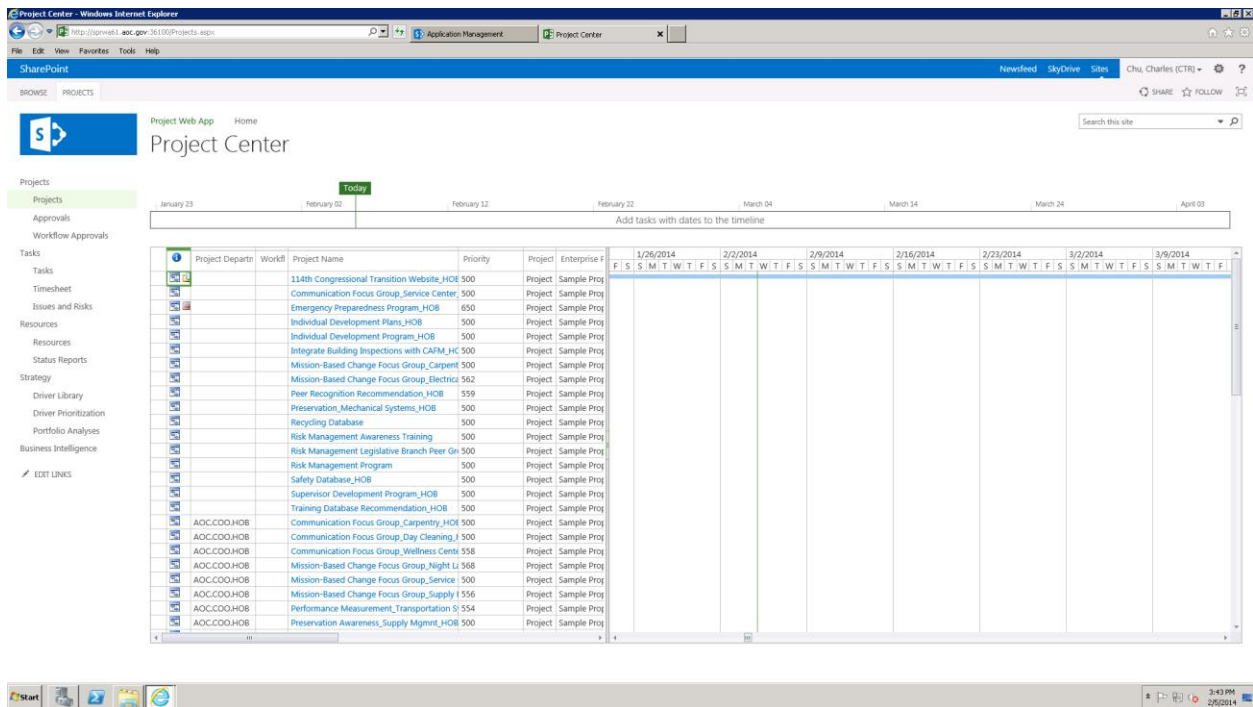
1) Customize master page and page layout:

6

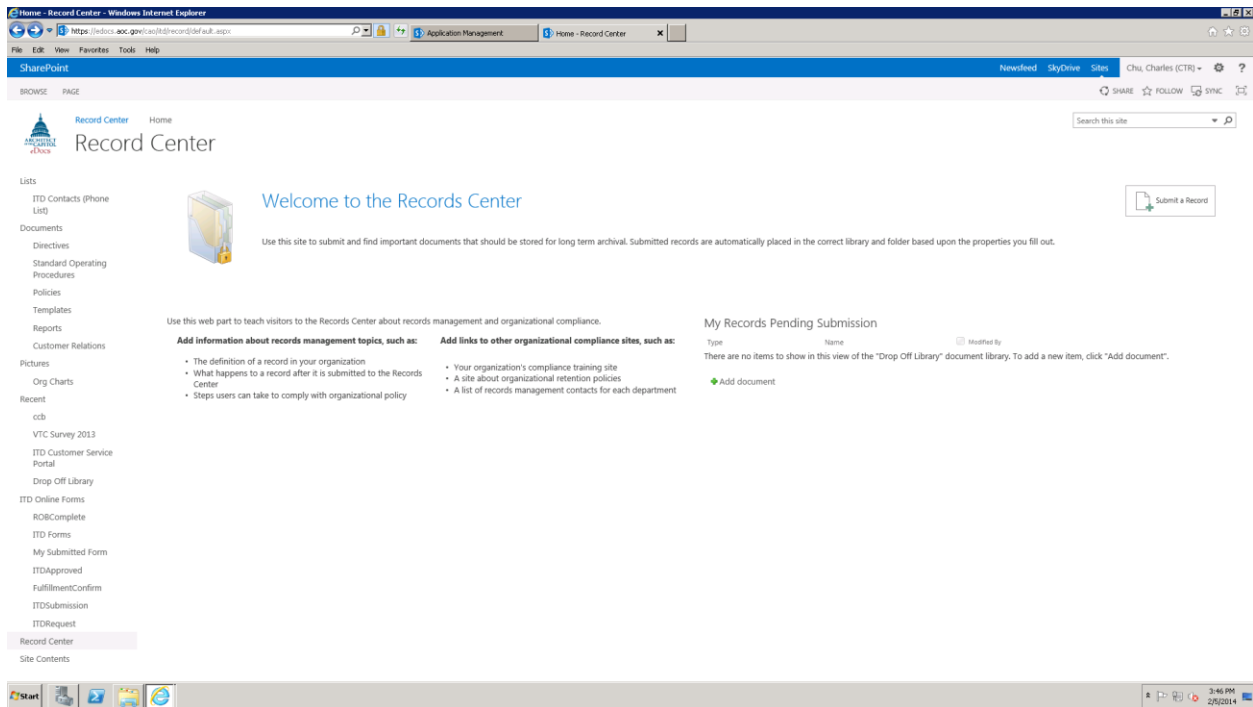
### 3) Integrate SharePoint 2013 with Microsoft Office Web App Server



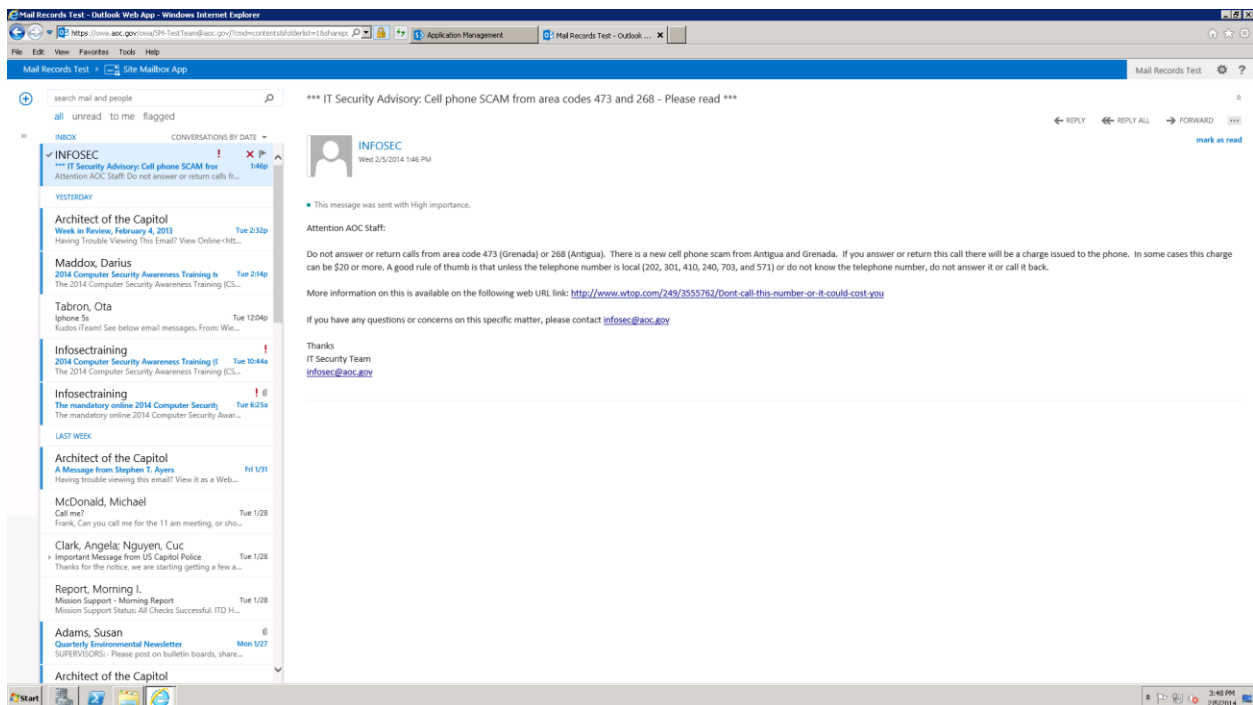
### 4) Integrate SharePoint 2013 with Microsoft Project Server 2013



## 5) Enable Records Center

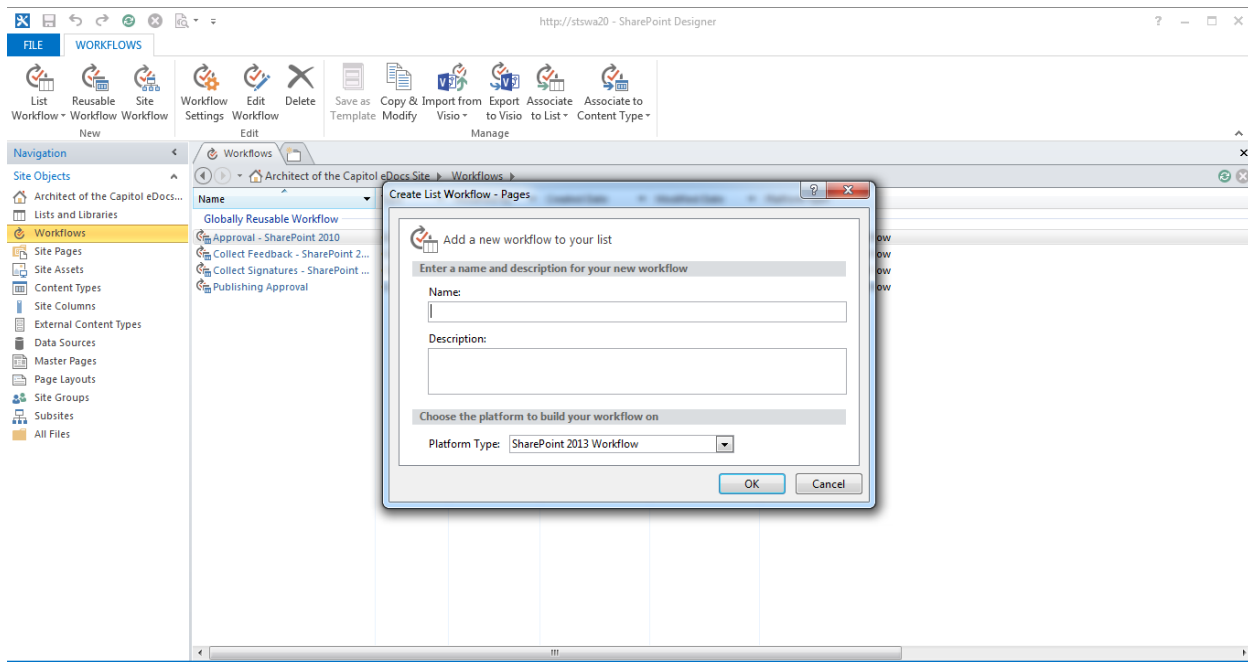


## 6) Enable SharePoint SiteMail

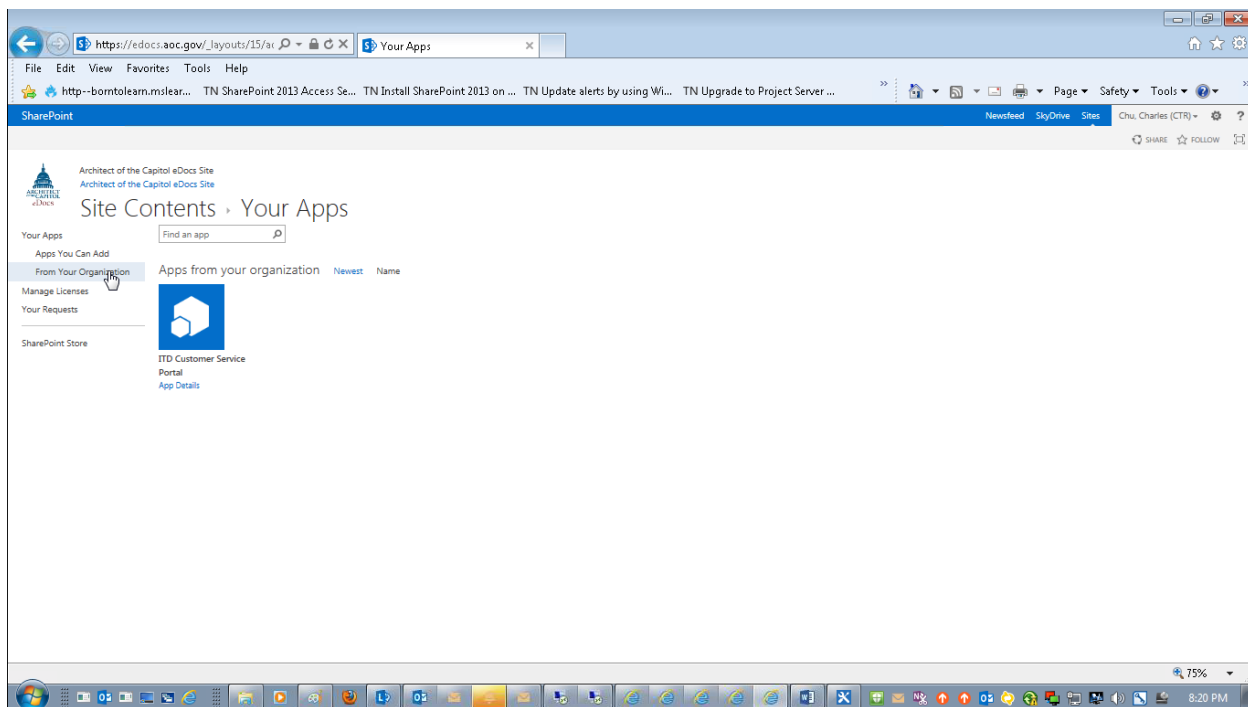




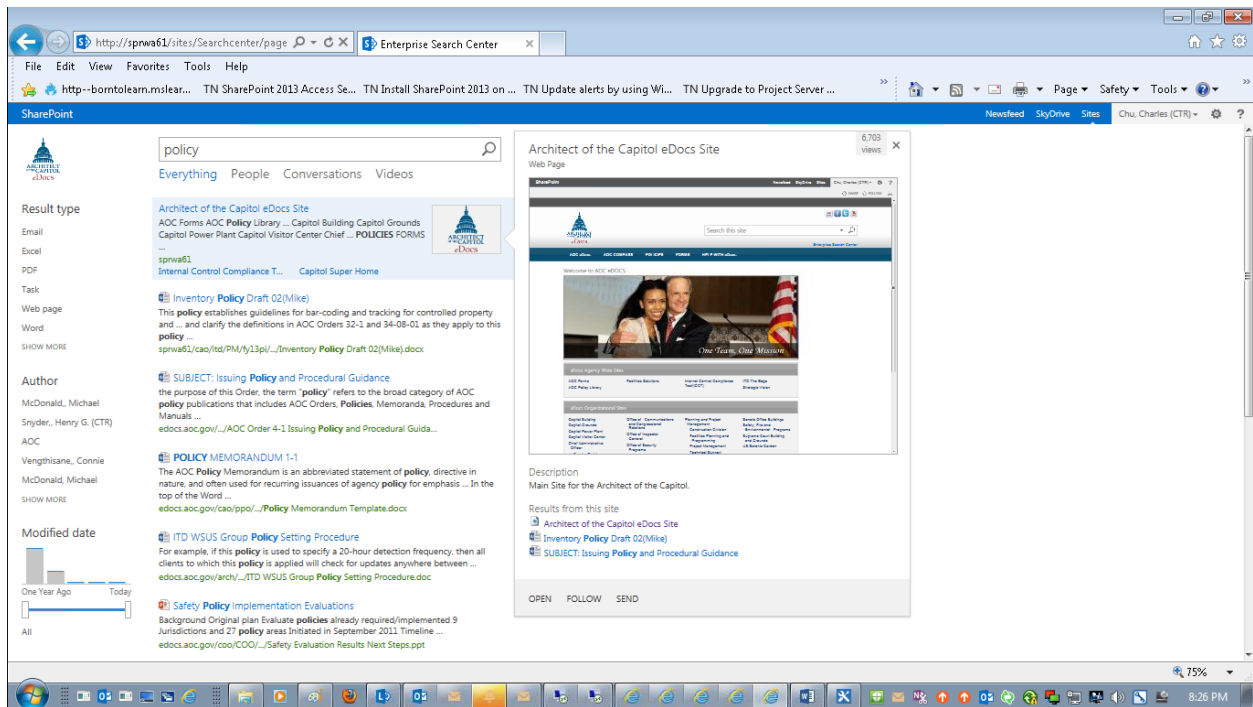
## 7) Integrate SharePoint 2013 with Workflow Server to realize SharePoint 2013 workflow



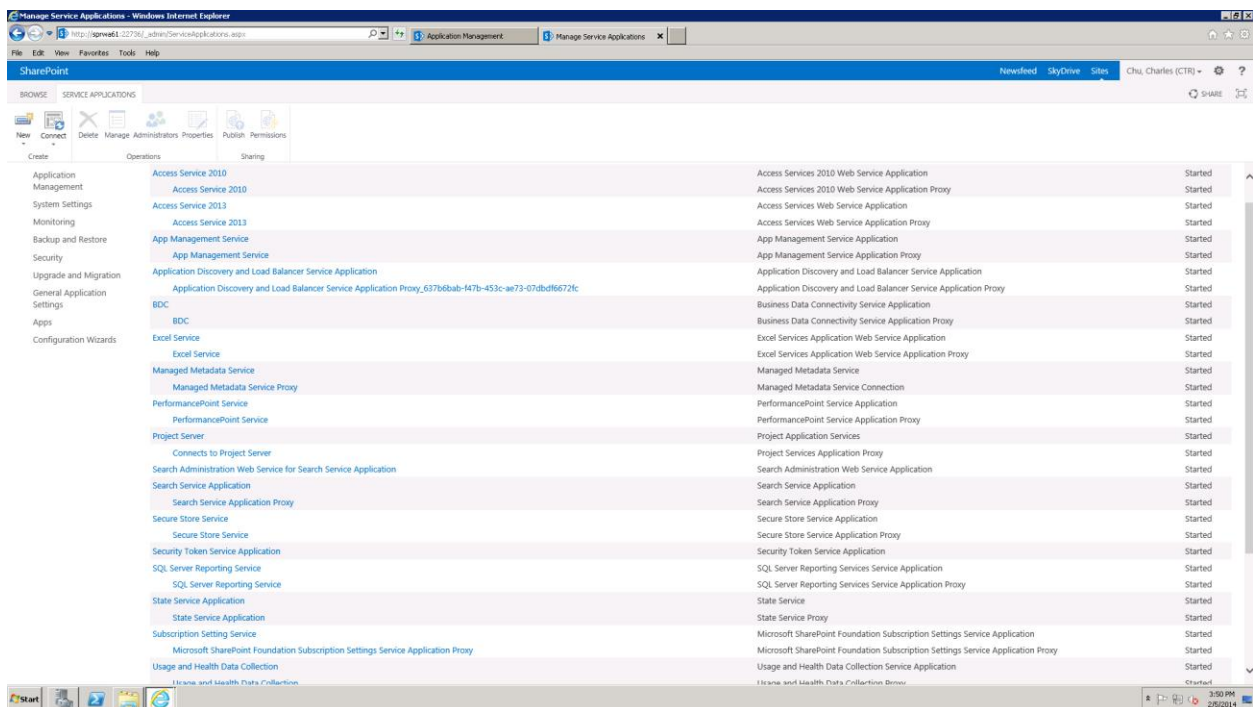
## 8) Develop SharePoint Apps



## 9) Enabled Enterprise Search/FAST Search



## 10) Enable PowerView/ BDC/PerformancePoint Service/Access Service 2013



## 11) Use DocAve to do content migration

Administration/Content Manager - Windows Internet Explorer provided by Architect of the Capitol and ITD

Content Manager > Plan Manager

User: admin

DocAve Home Plan Manager

Job Monitor

Job Monitor Scheduled Job Monitor

Time Zone: Default

View Details Download Delete Date Range Module Report Location

Manage Filter Settings

Search all pages Search current page Input Keyword

Job ID	Plan Name	Module	Progress	Status	Start
CM20140206111232986342	2010 Move	Content Manager	1 %	In Progress	2014-2-05
CM20140206100411302133	Move 2010	Content Manager	100 %	Finished with Exception	2014-2-03
CM20140206091627614880(Test Run)	Move 2010	Content Manager	100 %	Finished	2014-1-30
CM20140205135107521510	Move webdocs	Content Manager	100 %	Finished	2014-1-30
CM20140205124909762272(Test Run)	Move webdocs	Content Manager	100 %	Finished	2014-1-28
CM20140205120640317115	Move webdocs	Content Manager	4 %	Stopped	2014-3-23
CM20140205111227856323(Test Run)	Move webdocs	Content Manager	100 %	Finished	2014-3-23
CM20140130132036887194(Test Run)	Term Copy Test 03	Content Manager	100 %	Finished	2014-3-23
CM20140130104044150927	Test Term Copy 02	Content Manager	100 %	Finished	2014-3-23
CM20140128142424235357	TermStore Test	Content Manager	100 %	Finished with Exception	2014-3-23
CM20130823111456969524	2010ToCFO	Content Manager	100 %	Finished	2013-3-23
CM20130823110642983804	AvePointTo2010	Content Manager	100 %	Finished	2013-3-23
CM20130823110213656696	ListToNewSiteCollection	Content Manager	100 %	Finished	2013-3-23
CM20130823105634157201	SecondListMove_Down	Content Manager	100 %	Finished	2013-3-23
CM20130823105018455157	MoveFirstList	Content Manager	100 %	Finished	2013-3-23

0 of 15 selected

Show rows 15 Go to 1 of 1

0 of 12 selected

Show rows 15 Go to 1 of 1